

4-H Clover News

K-STATE
Research and Extension



Ford County Monthly Newsletter

April 2025

How to Reach Us:

Ford Co. Extension

100 Gunsmoke St
Dodge City, KS 67801
620.227.4542

Hours:

8:30am—12 noon
1:00pm—5:00pm

Agents:

Andrea Burns, CEA
Ethel Schneweis, CEA

Office Professional:

Cierra Blackwell

Emails:

aburns@ksu.edu
eschnewe@ksu.edu
cjblack@ksu.edu

Agent's Cell phone

Ethel—620-338-3676

Andrea — 620- 682-5530

Check us out

on the web!

www.ford.ksu.edu
www.kansas4-h.org
facebook.com/fordcounty4h



LIVESTOCK WEIGH-IN AND TAGGING DATE

If you are planning on showing livestock this year at the County Fair, you **MUST weigh and tag your livestock at the respective weigh-in and tagging date**. What if the 4-H'er is unable to be at the weigh-in? No worries, the ANIMAL can be brought to the weigh-in by anyone. If you have questions, just let us know!

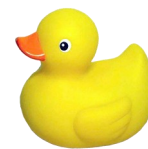
SMALL ANIMAL (SWINE, SHEEP, GOAT, BUCKET CALF)

Tuesday, April 8, 4:00 pm—6:00 pm @ Ford County Fair Grounds
Alternate date is Tuesday, April 15

Animals for state shows that are not brought to respective weigh-in dates, will have a service charge of \$25 applied to tag animals at their farm.

EAR TAG POLICY

4-H Council policy allows a 4-H'er up to six (6) ear tags per species (i.e. up to 6 for beef, 6 for sheep, 6 for goats, 6 for swine). Any tags over the provided six will be at the expense of the 4-H'er and their family.



QUACK ATTACK FUNDRAISER

Most Club Leaders have Quack Attack Duck Leases for families to sell. The Ford County 4-H Council would appreciate if all clubs can sell duck leases for this fundraiser. Each club received either a book of 50 tickets, 25 tickets or books divided into smaller quantities of 12 or 14. These duck leases are for the Q97/Z98 Quack Attack Duck Race to be held on June 7. at the Dodge City Main Street Festival. The funds from each duck lease purchased from a 4-H'er will come back to the Ford County 4-H Council and your 4-H Club. Please leave the yellow copy of the tickets in the book. Give the white copy to the person buying the ticket. They must be 18 years old to purchase a ticket. Leases are \$10 each or 6 for \$50. Checks made to: Z98 GREAT QUACK ATTACK. If purchasing a 6-Quack, mark the box on one lease only as a free duck **ALL Duck Leases and money must be returned to the Extension Office by 5:00 p.m. on Tuesday, May 27. Tickets and money can be returned anytime between now and the deadline.** Community Leaders/families will need to keep track of who sells and if you need more duck leases or have further questions, please call us! Please try and sell the books your leaders checked out before requesting additional books.

4-H Council voted to distribute the funds raised by giving 20% to 4-H Council and the rest of the funds distributed by percentage of tickets/funds raised by each individual club. So the more leases you sell the more money your club will receive back. The Alley will also be selling leases.

4-H EXCHANGE/AMBASSADOR MEETING

The regular scheduled meeting will be April 28 at 7 p.m. at the Fair Building.

4-H COUNCIL MEETINGS

The May meetings will be on Tuesday, May 27. (day after Memorial Day)

LIVESTOCK SALES/SHOWS

Now is the time that several fliers concerning upcoming sales and livestock shows are being sent to the Extension Office. These fliers, along with show bills will be compiled into a binder and available in the office. Feel free to come and look through it! You can also ask for these to be emailed to you by contacting Andrea to have your email/name added to her list.

HORSE NEWS

Horse ID Papers are due into the office by June 1 . They must be signed by an Extension Agent. If we are not in the office you will be asked to leave them for a signature.

As part of the qualification requirements for the Kansas State Fair 4-H Horse Show, members must **complete the Horse Safety Webinar** and pass the quiz. They are both available on the Kansas 4-H Equine Webinar page <https://www.kansas4-h.org/projects/animal-science/horse/index.html>

They must be completed prior to the entry deadline (August 1, 2025).

Coggins Testing: All exhibits in the County Fair and State Fair 4-H Horse Show must present proof of negative Coggins test within the last 12 months at check-in. No District Horse Show this year. You must have an affidavit for the State Fair to show.

Shooting Sports—Shotgun

County Wide leader, Troy Robertson, will start to hold practices on Sunday, April 27 at 1:30 pm at the Dodge City Gun Club, (1 mile east of Ave A on Garnett, turn south on Longhorn road). The first meeting is a required safety meeting. If you have questions, contact Troy at 620-338-3028

ADD/DROP DATE -MAY 1ST!



WHAT DOES ADD/DROP A PROJECT MEAN? When you completed your enrollment on the <https://v2.4honline.com/> website, you selected a project(s) to be “enrolled in for this 4-H Year”. This means you are planning to explore/participate/learn about this project and possibly enter something in the fair for that project area. May 1st is your last day to either ADD another project you would like to participate in or DROP a project you already signed up for that you are not interested in anymore. We encourage you to take something for each project that you are enrolled in to the fair; however it is not required. If you don't remember what you signed up for, just go to the <https://v2.4honline.com/> website and check, you can then either add or drop projects. After May 1st you will not be able to make changes as that part of the enrollment process will be closed. If you have any questions , please call us– we'd love to help you!



COUNTY FAIR SUPERINTENDENTS

We need superintendents for the fair divisions to function correctly. Please consider signing up to help. All adult leaders/parents and junior leaders (ages 12 and older) are encouraged to volunteer at your next club meeting. If you have a friend or other family member who might be interested in helping, please ask them and let us know.

County Wide Tree Planting Opportunity

The City of Dodge City is having a Tree planting event on April 26 at 10 am for 4-H members to participate in. More information and a flier will be available soon.

CAMPS

INFO

ROCK SPRING 4-H CAMP

ROCK SPRINGS 4-H CENTER



RSR will offer more flexible session opportunities for camp at Rock Springs Ranch. They know our camp families are busy so they want to make sure you can fit this important experience into your summer schedules.

4-H Open Attendance: Attend any session that fits your schedule. They also encourage all of our county clubs to find a session that they can attend together.

Open Enrollment: They are inviting ANYONE who wants to experience Kansas 4-H Camp at Rock Springs, regardless of 4-H membership. Every young camper deserves to experience the positive youth development that makes 4-H special.

Extended Sessions:

Offering a choice of 4 days/3 nights OR 7 days/6 nights.

Scholarships available for RSR Camp:

Ford County 4-H Foundation is offering a \$100.

Ford County 4-H Council is offering a \$50

These will be available after we receive your registration notification.

They want to make sure your arrival to camp is safe, fun, and as carefree as possible. Their bus transportation is available for some of the camp sessions. Check it out on their website. Upon camp enrollment, select an available bus option near you and ride with friends or other kids from your area! The incredible team at Rock Springs Ranch can't wait to welcome your child to Camp!

4 Clover Camp

"BE A 4-H ALL STAR AT 4-H CAMP"

JUNE 11-13

Dodge City Community College

Looking for a summer camp closer to home?

4-Clover Camp is the camp for you! 4-H youth ages 7 to 12 years old are invited to attend this 3 day 2 night camp for \$110, but the 4-H Foundation will provide a \$50 scholarship and Ford County 4-H Council will sponsor \$20 scholarship. Your final cost will be \$40. This camp is jammed packed with activities such as: fishing, swimming, crafts, and new friends. This camp is for Clark, Ford, Gray, Hodgeman and Walnut Creek District (Lane, Ness & Rush) 4-H'ers. Registration is due May 30, and registrations is on a first come, first service basis.

Apply for the Blake Stanley Camp Scholarship to help reduce your camp cost even more!! Registration forms on website.

Camp Counselor applications are due into our Office by May 1. If you would like to be a counselor for 4 Clover Camp (14 or older) or possibly for Day Camp (14 or older), please complete the application! This can be found on our County website and it is a 1 page (front and back) application.

DISCOVERY DAYS

Kansas 4-H Discovery Days is planned for KSU campus June 4-6

Youth ages 13-18 before January 1, 2025 are invited to register

Cost: TBD (minus scholarship of \$75 -4-H Foundation and \$50—4-H Council)

Registration: coming soon—registration deadline is May 5

Classes fill up fast to register soon!

Day Camp

June 17,

Ford County Fair Building

Explore the World with 4-H Day Camp

Registration forms available on website.

Please Note

Several of the Camps listed are made affordable by financial assistance from the **Ford County 4-H Foundation** and **Ford County 4-H Council**. Take a few minutes out of your day to thank them.

Also consider applying for the **Ford/Gray County Scroggins Scholarship** and the **Blake Stanley Scholarship** mentioned below.

CAMP PAYMENT POLICY

- **For any activity registration:** Payment arrangements can be made in writing with the Extension Office to set up a payment schedule. Full payment is due by the registration deadline.
- **For online registrations:** **Full payment is due to the Extension Office by the online event deadline unless a written payment agreement is made between the Extension Office and the participant.** Failing to meet those requirements will result in cancellation of registration (participant will still be responsible for the \$25 cancellation fee and possible registration cost based upon event guidelines.)
- **Transportation:** A transportation fee of \$15 per person will be added to fees for trips that require travel in a county vehicle outside of Ford County.

4-H Shutterbugs at the Zoo

The State Photography Committee will be holding a photography Shutterbug Event at Botanica in Wichita that will take place on Saturday, May 3 beginning at 9:00 am.

For those of you who are not familiar with Shutterbug Events, these are state wide photography workshops that are held in different areas of the state. Please note, this will be the only Shutterbug event for Spring 2025.

The registration fee to attend this event is \$24.00 per attendee. Members from the state photography committee will be holding workshops from 9:30-12:00 on a variety of topics. The registration fee allows for all day access to Botanica and each 4-H member will get two photo mount boards with registration. They will also have cameras available for youth to check out during this event; you will need to bring an SD card so you can take home your photos at the end of the event.

4-H youth in attendance are required to have an extension agent, screened volunteer or parent/guardian with them for this workshop. Event registration can be found here <https://cvent.me/arPGWe>

SCROGGINS STATE 4-H CAMP/EVENT SCHOLARSHIP

All 4-H'ers of Ford and Gray County have the opportunity to apply for the Scroggins State 4-H Camp/Event Scholarship. Campers wishing to attend a State 4-H Camp (i.e. Discovery Days, KYLF, Space Tech Camp, Sewing Camp, etc.) are eligible to apply for this scholarship.

Those interested in applying for a Scroggins Camp Scholarship, must fill out the 'Scroggins State Camp/Event Scholarship Application' by the Camp Registration Deadline. The number and amount of awards will be determined by the individual county, with consideration to existing support, participation, and county need. Selection will be based on expressed need. For project specific camps/events, preference will be given to 4-H'ers enrolled in the project. **No more than one scholarship may be received per 4-H'er/per 4-H year (October 1—September 30).** Incomplete applications will not be considered. Applications are available on ford.ksu.edu under the 4-H tab or at the Extension Office.

BLAKE STANLEY SCHOLARSHIP

If you are planning to attend 4-Clover Camp, we encourage you to apply for **one of five \$35 scholarships provided by the Blake Stanley Memorial 4-H Scholarship fund**. If you are interested in applying, you must write an essay with a maximum word count of 200. In the essay please answer the following questions:

- Why do you want to go to 4-H Camp? Why is 4-H important to you?
- Why do you need a scholarship for camp?

Essays are due on May 30 to the Office. More info can be found on our Ford County Camp website.

YOUTH FOR THE QUALITY CARE OF ANIMALS (YQCA)

Last month's newsletter had a flier concerning how to obtain your YQCA certification. This is a requirement for the Ford County Fair as well as for State Fair and KS Junior Livestock Show. This must be done by May 1 prior to submitting Beef nominations and June 15 for commercial heifers, market swine, commercial gilts, market lambs, commercial ewes, and ALL meat goats, nominations. Questions, call Andrea at the Extension office. For County Fair purposes it must be completed prior to county fair pre-entry.

After the youth have taken the required pre-test and completed the course, they should log into their account at yqcaprogram.org, click on the blue box on the top right with the user name and print certificate. If you have questions, call Andrea.

LIVESTOCK PROJECT INFORMATION

Great resources for any livestock project member can be found at the following website:

<https://www.kansas4-h.org/projects/animal-science/index.html>

This website has resources, such as project sheets for project activities, project materials (most of these materials mentioned we have copies in the office to check out, so no need to purchase), website links, and various other general information. Check it out if you are new to a specific livestock project area.

K-State Youth Livestock Nomination information, instructions and Rookie Guide are also available on this site.

BIG R PRODUCING PARTNERS PROGRAM

Big R is continuing their Producing Partners Program which 4-H, FFA and other livestock exhibitors can join. Big R will sponsor a maximum of 1 large animal and 2 small animals per participant. Large Animals are listed as Horse and Cattle. Small Animals include Rabbit, Poultry/Fowl, Dog, Cat, Goat, Lamb and Swine. Enrollment is from April 1 to May 15, 2025

For more information and an application form, please contact one of the agents. Please remember to thank them for their generosity.

FORD COUNTY LIVESTOCK JUDGING RESULTS

Ford County 4-Hers participated in the **SW District Livestock judging contest** recently at the Western State Bank Expo Center. Congratulations to all who participated.

Jr Team—13th
Chance Scott—35th

Sr Team—3rd
Jayden Torres—2nd
Klayton Hessman—6th
Finn Martinez—19th
Shaun Scott—21th

Congratulations!

Check out Judgingcard.com for all results and class placings.

State 4-H Horse Judging

State 4-H Horse Judging results have been posted to the Kansas 4-H page at <https://www.kansas4-h.org/educational-experiences/project-based-events/contests/horse-judging/>.

Kaycee Swan—25th overall Individual; 9th individual Performance.

2025 State Livestock Nomination Information

The state livestock nomination process is an online system! This will require families to plan ahead in order to successfully complete their nominations. The process includes four (4) primary steps:

- 1.) Purchasing Official DNA Envelopes in Advance through ShoWorks
- 2.) Submitting Animal & Exhibitor Information Online
- 3.) Mailing DNA Envelopes with Submission Receipt
- 4.) Extension Agents & FFA Advisors Approve Nominations Online

Returning exhibitors need to use the existing account they created last year. On the Sign In page, select the option on the right at the bottom of the page, "I have previously registered this year". This will allow you to login, input the child's 4-H age (1/1/25), new YQCA number, and animal housing location, then move on through the system. If you need to edit an exhibitor's contact information or local agent, you can, but if everything is the same, you don't have to re-enter it this year. If you have forgotten your password DO NOT create a duplicate account. This will complicate things later. The system offers an option to reset your password. It typically arrives within 5 minutes. Make sure to check your spam before re-sending the request. DNA envelope orders will close 10 days prior to the nomination deadline for each specie. This will be April 20 for market beef and June 5 for small livestock. Order them early to make sure they arrive in time!

Process Overview:

Purchase official DNA envelopes directly through ShoWorks for each animal you would like to nominate.

1 animal = 1 envelope.

- This is how the nomination fee will be paid in order to continue honoring family nominations without it costing you on a per child basis. It also allows you to pay via credit card; funds will no longer be included when you mail your DNA samples. The cost is \$12/animal (per envelope).
- The DNA envelopes will include a place for the barcode sticker, as well as additional animal information.
- Old DNA envelopes ordered before 2022 will NOT be accepted.
- There is an option for expedited delivery. The cost will be \$50 and envelopes will be overnighted. This means they will continue to ship DNA envelopes after the order deadline, but you will have to add the expedited shipping fee to your cart and pay extra for this service upon placing the order in ShoWorks. It is in addition to the \$12/ envelope nomination fee. If you order in advance (prior to the appropriate order deadline), you do not need to pay the expedited shipping fee and your envelopes will be sent standard mail via USPS.
- Enter your animal & exhibitor data online through ShoWorks. It is recommended that you use a computer to complete this step

Nominations must be submitted by 5:00PM on the appropriate deadline. The system will automatically close.

The deadlines have not changed. Market Beef nominations are due May 1. The Small Livestock and Commercial Heifer Deadline is June 15. These dates include submitting the information online through ShoWorks and postmarking the appropriate DNA sample(s). Late nominations will not be accepted. Information and resources regarding the state livestock nominations process maybe found here: <https://www.asi.k-state.edu/research-and-extension/youth-programs/nominated-livestock/>. All families, regardless of experience level, are encouraged to read through the Rookie Guide and use the other resources available from the state. Call Andrea with any questions you might have.

The State will be hosting zoom sessions again this spring to go over the state livestock nomination process. They will go through the process, step-by-step, as well as answer questions. Attendees need to register by noon on the Monday prior to the zoom meeting to receive the link and attend the meeting. Sign up using the highlighted links. The zoom link will be emailed to those who register a few days prior to the meeting. The sessions will be recorded and posted on the [nomination information](#) page of the youth livestock [website](#), with the other nomination resources, following the meeting. The **beef session** will be hosted on **Thursday, April 10, at 6:00PM**. They will cover nominating market beef and commercial breeding heifers, as well as share some reminders for those planning to exhibit registered breeding heifers. Beef State Nomination Zoom Registration Link – https://kstate.qualtrics.com/jfe/form/SV_d0wgftXvDUczSle

Nomination Process continued

Club Options Modified

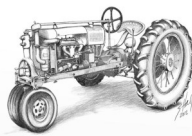
Each exhibitor must select the “CLUB” in which they participate and intend to show. For 4-H members, this is their local county. All FFA Chapters have also been added to the system under the county is which they are located. For example, Dickinson county 4-H’ers will select “Dickinson” as their “Club” in the system. An Abilene FFA member will find their chapter under “Dickinson – Abilene FFA”. This will allow FFA members to be able to select the appropriate Club more easily, as well as assist the shows in stalling assignments. It is vitally important families select the appropriate “Club”.

Use Checkbox Under Market Division for Dual Nominated Females

Exhibitors will continue to have the option to dual nominate gilts, ewes, and does by using a sliding checkbox, under the market division for each specie, rather than entering the information twice (once under each division). Dual nomination means the animal is nominated both in the market division and in the commercial breeding division. Therefore, they are eligible to be entered by an exhibitor and shown in either division for the Grand Drive and/or KJLS. The decision will be made during show entry. Families who wish to take advantage of this option will need to nominate all of their gilts, ewes, and does under the market division, and then move the “Dual Nom (Mkt & Com)” slider button to the blue “YES” on the bottom of the page. All animals will still need to be submitted online under each exhibitor account within a family to be available later for all kids during the show entry process. Only one (1) DNA sample is required for dual nominations.

TRACTOR SAFETY TRAINING

Tractor Safety Training is Tuesday, June 3 for youth 13 and older, who would like to attend. Registration starts at 8 a.m. The training is from 8:30 a.m. - 5:00 p.m. at the Gray County Fairgrounds. More information will be available soon.



Current Project Leaders:

Horse — Shayla Tieben

Livestock Judging — Jay Langlois
— Eddie Nichols

Beef — Matt and Lindsey Durler

Meat Goat — Andrea Burns
Jr. Meat Goat Ld.—Adeline Robinson

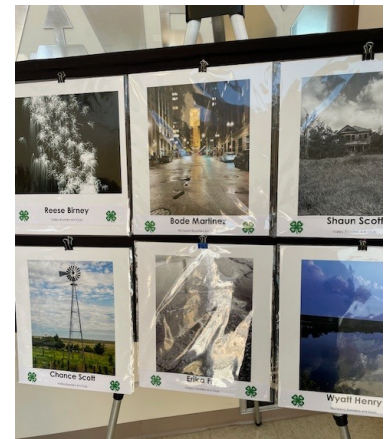
Rabbit Jr. Leader—Adeline Robinson

Shooting Sports Shotgun — Troy Robinson

Archery — Brandi Stein
Upcoming project meetings will be sent out
when scheduled

TRAVELING PHOTO DISPLAY

The Traveling Photo Display of photos selected from 2024 County Fair are on display at the Bucklin Public Library. Be sure to stop in and check out the 4-H photos on display in the Library Entrance!!



County Fair Info (July 17-21)

All American Fun at the Ford County Fair



Some changes to expect are:

- Fair Theme – All American Fun at the Ford County Fair
- Grand Champion ribbon premium with an option to order a trophy if wanted after the fair
- Still working on schedule and details but here are a few reminders
 - Photography judging time will be Monday morning prior to Fair, like last year
 - Round Robin changes, will need decision by Sunday evening, no changes Monday am
 - Livestock Skill-a-thon will be on Saturday, June 19, 2-4 pm
 - No livestock premium sale/auction, but will have a grand drive event in August
 - Ford County Fair Superintendents/Volunteers needed – sign up at club meetings
 - Poultry bleeding – no testing this year since we had it done last year
 - Only one Cow Patty Bingo event, Sunday at 2:30 pm
 - Minor show time changes for livestock
 - Fair Books will hopefully be out in mid-May
 - NEW Fair Adult Celebrity Showmanship – Friday, Night, July 18, 6:30 (more information coming through Community Leaders and 4-H Council members)

Spring Into Volunteering

The Association of Kansas 4-H Volunteers is hosting "Spring Into Volunteering" in Salina on the K-State Polytechnic Campus on Saturday, April 26. Registration will begin at 9 a.m., and the day will conclude at 3 p.m. This is for anyone serving as a 4-H Volunteer or considering it! The goal is for volunteers to go home recharged, excited, and ready to try new things in their volunteer roles.

Sessions for the day include Preparing Youth for Real-World Opportunities, Personalities and How They Affect Volunteers, Facilitating Civic Engagement and Service, Keeping Kids Engaged, and Resources for You.

The registration fee for the day is \$20 and includes materials and lunch! Online registration is due April 15, 2025, and the fee will be submitted to local offices.

Planning for National Volunteer Week April 20-26, 2025

It is time to get National Volunteer Week on your calendar so you are sure to have a plan to recognize your local 4-H club leaders and volunteers.

Ideas to Celebrate National Volunteer Week:

- Encourage club members and families to recognize their organizational leaders, project leaders and other important 4-H volunteers during the week.
- Prepare a series of Facebook posts to recognize volunteers during the week.
- Have a program participant share a success story about the volunteer.

::4-H Shout Outs::

- ♦ All Regional Club Day participants! All participants did an excellent job with their presentations.
- ♦ All Exchange members and their amazing parents for successful Flea Market and Dance Recital /Soup Supper fundraisers!



4H HORSE PROJECT



If you are in the horse project, please contact Shayla Tieben:

Cell Number: 620-255-6146

To get ahold and talk about availability for horse practices and when they would work best for everyone!

Rescheduled

FOCUS ON THE

FUTURE

FOR FORD COUNTY

EXTENSION

-ALL PROGRAMMING OPPORTUNITIES-

April 30, 2025

6:30 PM

**Will be held at Ford County Fair
Building 901 W. Park St.**



K-STATE
Research and Extension

Meeting will be facilitated by trained K-State facilitators

K-State Research and Extension is committed to providing equal opportunity for participation in all programs, services and activities. Program information may be available in languages other than English. Reasonable accommodations for persons with disabilities, including alternative means for communication (e.g., Braille, large print, audio tape, and American Sign Language) may be requested by contacting the event contact two weeks prior to the start of the event at (620-227-4542). Requests received after this date will be honored when it is feasible to do so. Language access services, such as interpretation or translation of vital information will be provided free of charge to limited English proficient individuals upon request. Kansas State University Agricultural Experiment Station and Cooperative Extension Service K-State Research and Extension is an equal opportunity provider and employer. Kansas State University Agricultural Experiment Station and Cooperative Extension Service K-State Research and Extension is an equal opportunity provider and employer.

IPM Insect Art Contest -

The K-State Research and Extension Pesticide Safety and IPM Program is hosting its annual insect-themed art contest, open to all ages and skill levels in Kansas! This year, the theme is "By the Light of the Moon: Insects at Night."

The goal is to explore why and how insects are active or inactive at night, then create artwork that fits the contest theme. Art may be a drawing or painting, digital art, or a 3-D piece such as sculpture, stained glass or other media.

There are five age categories in which 1st -3rd place will be awarded:

Kindergarten - 2nd grade

3rd grade - 5th grade

6th grade - 8th grade

High school

Adult

Entries must be received or post-marked before April 15, 2025.

Visit <https://www.ksre.k-state.edu/pesticides-ipm/> for full details.

4-H Wheat Expo

The Kansas 4-H Wheat Expo will be held Thursday, August 7, 2025 at the South Hutchinson Community Building. Tours are being finalized and registration information will be out soon. The 4-H Wheat Expo is an opportunity for 4-H families to engage in learning more about Kansas Wheat and our Kansas Agricultural industry. Youth participants have the opportunity to take part in hands-on judging opportunities including a Crop ID contest, exhibiting wheat related projects for foods, photography, wheat variety plot educational displays, 1 lb. bin run for crops members, or 1 lb. bin run for "adopt a producer". Youth may bring multiple exhibits.


Ford County Extension Office
100 Gunsmoke St
Dodge City, KS 67801

Dear 4-H Families,

If you want to attend camp, you must get your registration and fee submitted as early as possible. Registration for all camps will be a first come basis. You can find more information about camps and their registrations forms on our website OR we have copies available in the Extension Office.

Be sure to decide if you need to drop or add any projects and do this prior to May 1. Remember Horse ID papers deadline is June 1! You do not need to wait until the deadline to do these things. If you have problems or questions, please reach out.

Take a few minutes and read through the newsletter. Lots of information is included.


Ethel Schneweis
County Extension Agent


Andrea Burns
County Extension Agent



K-STATE
Research and Extension

K-State Research and Extension
Ford County
100 Gunsmoke St
Dodge City, KS 67801
K-State, County Extension Councils,
Extension Districts, and U.S. Department of Agriculture Cooperating.

K-State Research and Extension is an equal opportunity provider and employer.